

**The implementation of the Traffic
Infraction
Notification Procedure, called
“Blue Ticket,”
for bicycle traffic law violations.**

” Blue Ticket” bicycle traffic violation system

Content

Effective April 1, 2026, the “Blue Ticket” system will be introduced. Japan Police will issue Blue Tickets to cyclist who violate traffic laws.

Person Subject to Regulation

The system applies to cyclists 16 years old and older
*Applies to All Nationalities

Traffic Infraction Fines

- The Amount of the fine is fixed for each violation.
- The fines should be paid at either Bank or Post Office within the designated time on the ticket.

Examples of violations and fines:

Using Mobile Phone	¥12,000
Using umbrella, using earphone	¥5,000
Riding double on bicycle	¥3,000

” Blue Ticket ” bicycle traffic violation system

Target traffic violations:

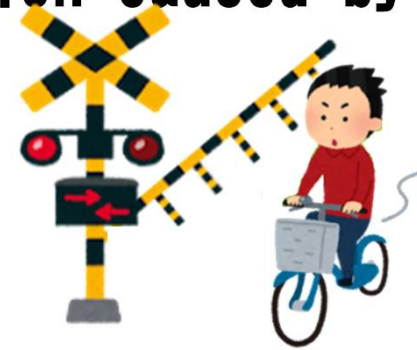
- ① A malicious or dangerous traffic violation caused by highly risky or troublesome act (e.g.)



Using mobile phone



Poorly maintained bike on the road (e.g. without brakes)



Entering into a closed railway gate

- ② When the possibility of the accident are high and more than two traffic violations are made at the same time (e.g.)



Ignoring red light while double riding



Stop sign violation while using umbrella

“Blue Ticket” bicycle traffic violation system

Target traffic violation:

- ③ When the violation causes the car driver to make avoidance measures such as sudden braking (e.g.)



When the cyclist ignores a red light at the intersection causing car-driver on the green light to step on brakes suddenly



Or, when the cyclist rides on the sidewalk with high speed causing pedestrians to stop walking

- ④ Given instruction or warning from the police officer, the cyclist violates the traffic rules intentionally (e.g.)



The cyclist continues on the right side of the sidewalk although given instruction or warning by a police officer



Or, willfully violating knowing that a police officer is present.

Major traffic violations and fines:

① Using mobile phone

¥ 12,000



② Riding double

¥ 3,000



③ Parallel riding

¥ 3,000



④ Riding at night without lights

¥ 5,000



Major traffic violations and infraction fines

⑤ Using umbrella

¥ 5,000



⑥ Using earphones

¥ 5,000



⑦ Ignoring a red light

¥ 6,000



⑧ Failing to come to complete stop ¥5,000

⑨ Proceeding on the right side of the road ¥6,000

⑩ Failing to yield on the sidewalk ¥3,000

⑪ Obstruction of pedestrian crossing ¥6,000