

# 特定原付

**Specified Small Motorized Bicycles**

特定小型附发动机自行车/특정 소형 원동기장착 자전거

## Safety-guidance

There are other specified small motorized bicycles which differ from e-scooters.



### Rule 1

歩道は原則**通行禁止**、車道の**左側**を通行します



Drive on the left side of the road you are on.  
Driving on sidewalks is not permitted. ※

必须在车行道上靠左侧骑行  
原则上禁止在人行道上骑行 ※

차도의 좌측을 통행합니다  
인도는 원칙적으로 통행금지 ※

※ 歩道を通行できるのは、6km/hモードの場合のみ(詳しくは裏面のQRから)

You may drive on sidewalks only when you set your specified small motorized bicycle to 6km/h mode.

For more detail, please scan the QR on the reverse side.

只有时速6公里模式时  
才能在人行道上骑行  
(扫描背面二维码可查看详情)

인도 통행은 6km/h  
모드 시에 한함  
(자세한 내용은 뒷면  
QR 참조)



### Rule 2



16歳未満は運転禁止です

A person under 16 years old is prohibited to drive specified small motorized bicycles

未满16周岁者禁止骑行

16세 미만의 사람은 운전금지

## Rule 3



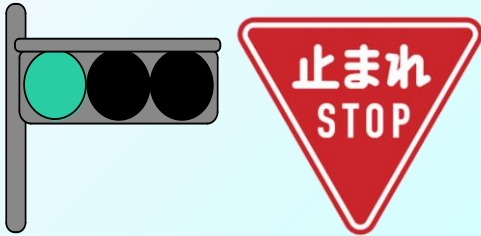
飲酒運転は禁止です

Drink-driving is prohibited

禁止酒后骑行

음주운전 금지

## Rule 4



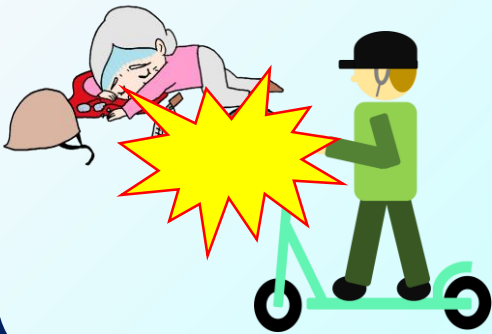
信号を守り、一時停止などの標識に従いましょう

You must follow traffic signals, stop signs and other road signs

必须遵守交通信号和暂时停车等标志

신호 준수, 일시정지 등 표지에 따라야 합니다

## Rule 5



交通事故が起きたら負傷者の救護や、110番通報をしてください

If you have an accident, you must give first aid and call 110

发生交通事故时必须救助伤员并拨打110报警

교통사고 발생 시에는 부상자 구호와 110으로 신고해야 합니다

## Rule 6



乗車時はヘルメットを着用しましょう

Wear a helmet for your own safety

骑行时要佩戴头盔

운전 시에는 헬멧을 착용하도록 해야 합니다

Detail



If you violate traffic rules, you will be given a traffic ticket.